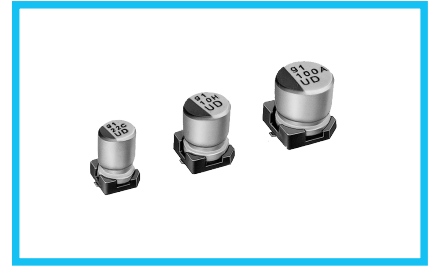
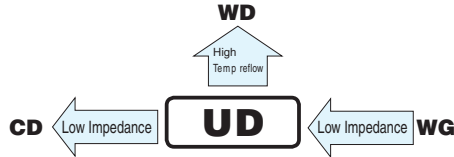


# ALUMINUM ELECTROLYTIC CAPACITORS

**UD** series Chip Type, Low Impedance



- Chip type, low impedance temperature range up to +105°C.
- Designed for surface mounting on high density PC board.
- Applicable to automatic mounting machine fed with carrier tape.
- Compliant to the RoHS directive (2011/65/EU).

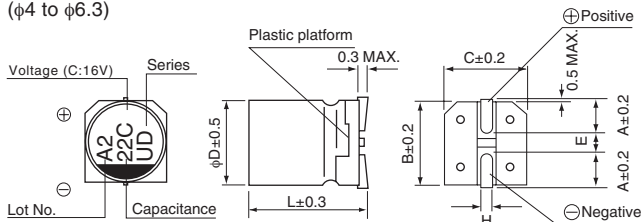


## Specifications

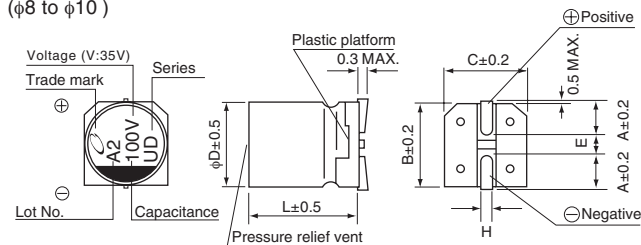
Item	Performance Characteristics																							
Category Temperature Range	-55 to +105°C																							
Rated Voltage Range	6.3 to 50V																							
Rated Capacitance Range	1 to 1500μF																							
Capacitance Tolerance	±20% at 120Hz, 20°C																							
Leakage Current	After 2 minutes' application of rated voltage, leakage current is not more than 0.01 CV or 3 (μA), whichever is greater.																							
Tangent of loss angle (tan δ)	Measurement frequency : 120Hz at 20°C																							
	<table border="1"> <tr> <td>Rated voltage (V)</td> <td>6.3</td> <td>10</td> <td>16</td> <td>25</td> <td>35</td> <td>50</td> <td></td> </tr> <tr> <td>tan δ (MAX.)</td> <td>0.26 (0.28)</td> <td>0.20 (0.24)</td> <td>0.16 (0.20)</td> <td>0.14 (0.16)</td> <td>0.12 (0.14)</td> <td>0.12 (0.14)</td> <td>( ) is φ8 over</td> </tr> </table>	Rated voltage (V)	6.3	10	16	25	35	50		tan δ (MAX.)	0.26 (0.28)	0.20 (0.24)	0.16 (0.20)	0.14 (0.16)	0.12 (0.14)	0.12 (0.14)	( ) is φ8 over							
Rated voltage (V)	6.3	10	16	25	35	50																		
tan δ (MAX.)	0.26 (0.28)	0.20 (0.24)	0.16 (0.20)	0.14 (0.16)	0.12 (0.14)	0.12 (0.14)	( ) is φ8 over																	
Stability at Low Temperature	Measurement frequency : 120Hz																							
	<table border="1"> <tr> <td>Rated voltage (V)</td> <td>6.3</td> <td>10</td> <td>16</td> <td>25</td> <td>35</td> <td>50</td> <td></td> </tr> <tr> <td>Impedance ratio Z<sub>T</sub>-25°C / Z<sub>T</sub>+20°C</td> <td>3</td> <td>2</td> <td>2</td> <td>2</td> <td>2</td> <td>2</td> <td></td> </tr> <tr> <td>Z<sub>T</sub> / Z<sub>T0</sub> (MAX.)</td> <td>Z<sub>T</sub>-55°C / Z<sub>T</sub>+20°C</td> <td>5</td> <td>4</td> <td>4</td> <td>3</td> <td>3</td> <td>3</td> </tr> </table>	Rated voltage (V)	6.3	10	16	25	35	50		Impedance ratio Z <sub>T</sub> -25°C / Z <sub>T</sub> +20°C	3	2	2	2	2	2		Z <sub>T</sub> / Z <sub>T0</sub> (MAX.)	Z <sub>T</sub> -55°C / Z <sub>T</sub> +20°C	5	4	4	3	3
Rated voltage (V)	6.3	10	16	25	35	50																		
Impedance ratio Z <sub>T</sub> -25°C / Z <sub>T</sub> +20°C	3	2	2	2	2	2																		
Z <sub>T</sub> / Z <sub>T0</sub> (MAX.)	Z <sub>T</sub> -55°C / Z <sub>T</sub> +20°C	5	4	4	3	3	3																	
Endurance	The specifications listed at right shall be met when the capacitors are restored to 20°C after the rated voltage is applied for 5000 hours (2000 hours for φD = 4, 5 and 6.3) at 105°C.																							
	Capacitance change	Within ±30% of the initial capacitance value																						
	tan δ	200% or less than the initial specified value																						
Shelf Life	After storing the capacitors under no load at 105°C for 1000 hours and then performing voltage treatment based on JIS C 5101-4 clause 4.1 at 20°C, they shall meet the specified values for the endurance characteristics listed above.																							
	Capacitance change	Within ±10% of the initial capacitance value																						
	tan δ	Less than or equal to the initial specified value																						
Resistance to soldering heat	The capacitors are kept on a hot plate for 30 seconds, which is maintained at 250°C. The capacitors shall meet the characteristic requirements listed at right when they are removed from the plate and restored to 20°C.																							
	Capacitance change	Less than or equal to the initial specified value																						
	Leakage current	Less than or equal to the initial specified value																						
Marking	Black print on the case top.																							

## Chip Type

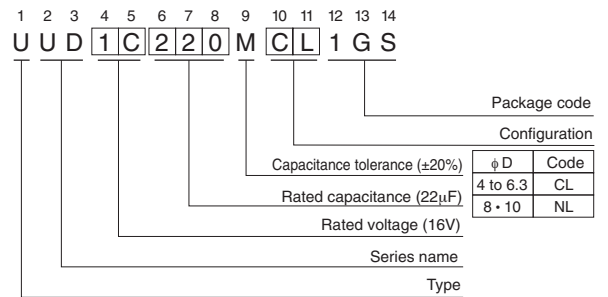
(φ4 to φ6.3)



(φ8 to φ10)



## Type numbering system (Example : 16V 22μF)



	(mm)					
φD × L	4 × 5.8	5 × 5.8	6.3 × 5.8	6.3 × 7.7	8 × 10	10 × 10
A	1.8	2.1	2.4	2.4	2.9	3.2
B	4.3	5.3	6.6	6.6	8.3	10.3
C	4.3	5.3	6.6	6.6	8.3	10.3
E	1.0	1.3	2.2	2.2	3.1	4.5
L	5.8	5.8	5.8	7.7	10	10
H	0.5 to 0.8	0.5 to 0.8	0.5 to 0.8	0.5 to 0.8	0.8 to 1.1	0.8 to 1.1

## Voltage

V	6.3	10	16	25	35	50
Code	j	A	C	E	V	H

● Dimension table in next page.



## ■ Dimensions

Cap. ( $\mu$ F)	V Code	6.3			10			16			25			35			50		
		0J			1A			1C			1E			1V			1H		
1	010																4 × 5.8	5.00	30
2.2	2R2																4 × 5.8	5.00	30
3.3	3R3																4 × 5.8	5.00	30
4.7	4R7													4 × 5.8	1.80	80	5 × 5.8	1.52	85
10	100										4 × 5.8	1.80	80	5 × 5.8	0.76	150	6.3 × 5.8	0.88	165
15	150							4 × 5.8	1.80	80	5 × 5.8	0.76	150	5 × 5.8	0.76	150	6.3 × 5.8	0.88	165
22	220				4 × 5.8	1.80	80	5 × 5.8	0.76	150	5 × 5.8	0.76	150	5 × 5.8	0.76	150	6.3 × 5.8	0.88	165
27	270	4 × 5.8	1.80	80	5 × 5.8	0.76	150	5 × 5.8	0.76	150	6.3 × 5.8	0.44	230	6.3 × 5.8	0.44	230	6.3 × 7.7	0.68	185
33	330	5 × 5.8	0.76	150	5 × 5.8	0.76	150	6.3 × 5.8	0.44	230	6.3 × 5.8	0.44	230	6.3 × 5.8	0.44	230	6.3 × 7.7	0.68	185
47	470	5 × 5.8	0.76	150	6.3 × 5.8	0.44	230	6.3 × 5.8	0.44	230	6.3 × 5.8	0.44	230	6.3 × 5.8	0.44	230	6.3 × 7.7	0.68	185
56	560	5 × 5.8	0.76	150	6.3 × 5.8	0.44	230	6.3 × 5.8	0.44	230	6.3 × 5.8	0.44	230	6.3 × 7.7	0.34	280	8 × 10	0.34	300
68	680	6.3 × 5.8	0.44	230	6.3 × 5.8	0.44	230	6.3 × 5.8	0.44	230	6.3 × 5.8	0.44	230	6.3 × 7.7	0.34	280	8 × 10	0.34	300
100	101	6.3 × 5.8	0.44	230	6.3 × 5.8	0.44	230	6.3 × 5.8	0.44	230	6.3 × 7.7	0.34	280	8 × 10	0.17	450	8 × 10	0.34	300
150	151	6.3 × 5.8	0.44	230	6.3 × 5.8	0.44	230	6.3 × 7.7	0.34	280	8 × 10	0.17	450	8 × 10	0.17	450	10 × 10	0.18	670
220	221	6.3 × 5.8	0.44	230	6.3 × 7.7	0.34	280	6.3 × 7.7	0.34	280	8 × 10	0.17	450	8 × 10	0.17	450	10 × 10	0.18	670
330	331	6.3 × 7.7	0.34	280	8 × 10	0.17	450	8 × 10	0.17	450	8 × 10	0.17	450	10 × 10	0.09	670			
470	471	8 × 10	0.17	450	8 × 10	0.17	450	8 × 10	0.17	450	10 × 10	0.09	670						
680	681	8 × 10	0.17	450	10 × 10	0.09	670	10 × 10	0.09	670									
1000	102	8 × 10	0.17	450	10 × 10	0.09	670												
1500	152	10 × 10	0.09	670															

Max. Impedance ( $\Omega$ ) at 20°C 100kHz,  
Rated ripple current (mA<sub>rms</sub>) at 105°C 100kHz

## ● Frequency coefficient of rated ripple current

Frequency	50 Hz	120 Hz	300 Hz	1 kHz	10 kHz or more
Coefficient	0.35	0.50	0.64	0.83	1.00

- Taping specifications are given in page 23.
- Recommended land size, soldering by reflow are given in page 18, 19.
- Please refer to page 3 for the minimum order quantity.